



**INDRAPRASTHA GAS LIMITED**  
**IGL Bhawan, 4, Community Center,**  
**Sector 9, R.K.Puram, New Delhi-110022**  
**Email: navdeep.kanwar@igl.co.in/mohit.gupta@igl.co.in/ sweeti.kumari@igl.co.in**

**REPLY TO PRE-BID QUERIES**

**RATE CONTRACT OF RVI /SIGNAGE REPAIR, MAINTENANCE AND UPGRADATION AS PER NEW IGL SIGNAGE DESIGN AT IGL CNG STATIONS/ESTABLISHMENTS**

**Tender No.: IGL/ET2/CP/CC18588 dated 12.09.2025**

Sl. No.	Section/ Clause No.	Page No.	Clause No.	Clause	Bidder's Query	IGL Reply
1	-	-	-	-	The tender value has not been specified.	Tender conditions shall prevail  Bidder need to quote their rates in the SOR provided and evaluation will be done as per tender conditions.
2	-	-	-	-	Since this is an SOR-based tender but no prices have been mentioned in the BOQ, it is unclear how to apply the plus/minus variation.	Tender conditions shall prevail  Bidder need to quote their rates in the SOR provided and evaluation will be done as per tender conditions.
3	-	-	-	-	Kindly confirm whether the EMD is exempted for msme vendors in this tender.	Please refer clause no.11.5 of IFB (pg. no.12) of tender document.
4	-	-	-	-	Is there any maximum and minimum seal percentage of bidding rate (eg., Minus 10% or Plus 10%)	Tender conditions shall prevail  No,Bidder need to quote their rates in the SOR provided and evaluation will be done as per tender conditions.
5	-	-	-	-	Is reverse Auction Applicable	No
6	-	-	-	-	Are Udyam registered Vendors exempted from EMD , If Yes .what Exemption Number And Exemption date to be used during Bidding process?	Tender condition shall prevail. Please refer clause no.11.5 of IFB (pg. no.12) of tender document.
7	-	-	-	-	HSN Code for RVI Elements: a. Kindly confirm the applicable HSN Code for all line items in the Price Bid SOR. b. Based on our classification, the HSN Code for RVI elements is 94056090. Please advise whether we may adopt this code or whether IGL will prescribe a uniform classification for all bidders.	Tender conditions shall prevail  HSN code shall be provided by the bidder as per tender terms and conditions,
8	-	-	-	-	Drawings for Understanding the work/Accurate Costing a. We request the provision of approved drawings/standard design for RVI/Signage elements. This will enable us to undertake precise costing and to structure the most competitive offer.	IGL Existing and New RVI design and Drawing attached for reference



**INDRAPRASTHA GAS LIMITED**  
**IGL Bhawan, 4, Community Center,**  
**Sector 9, R.K.Puram, New Delhi-110022**  
**Email: navdeep.kanwar@igl.co.in/mohit.gupta@igl.co.in/ sweeti.kumari@igl.co.in**

**REPLY TO PRE-BID QUERIES**

**RATE CONTRACT OF RVI /SIGNAGE REPAIR, MAINTENANCE AND UPGRADATION AS PER NEW IGL SIGNAGE DESIGN AT IGL CNG STATIONS/ESTABLISHMENTS**

**Tender No.: IGL/ET2/CP/CC18588 dated 12.09.2025**

9	-	-	-	-	<p>Site Visit and Reference Outlets:</p> <p>a. To better appreciate the scope and quality expectations, we request details of the IGL outlet where the new RVI branding has been implemented/Working.</p> <p>b. A site visit, along with access to current outlet photographs, would allow us to fully assess the technical detailing, quality benchmarks, and thereby prepare a realistic proposal.</p>	<p>a. New RVI branding work yet to start.</p> <p>b. IGL existing outlet RVI design attached for reference.</p> <p>Further, in case of requirement of site visit, interested participants may drop a request e mail to yogesh.singh@igl.co.in/ sweeti.kumari@igl.co.in for the same.</p>
10	-	-	-	-	<p>4. MSME Exemption from EMD</p> <p>a. As a registered MSME (Small Enterprise), we are eligible for EMD exemption in line with tender conditions. Kindly confirm whether submission of the MSME/NSIC certificate with Annexure-1 declaration is required solely via the e-portal, or whether a physical copy must also be deposited at your office address.</p>	<p>Please refer clause no.11.5 of IFB (pg. no.12) of tender document.</p> <p>MSME certificate with Annexure-1 declaration needs to be submitted on the e-portal only.No physical copy is required.</p>
11	-	-	-	-	Drawings required.	IGL Existing and New RVI design and Drawing attached for reference
12	-	-	-	-	Is Contract valid in place of a single work order in tender submission.	<p>Tender conditions shall prevail</p> <p>Bidder shall have executed Repair Maintenance/ Upgradation/ Modification/ Modernization/ Development/ Project Work of RVI (Retail Visual Identity)/ Fascia Work/ Signage Work and/or Canopy Roofing Sheetting at retail fuel filling station for at least Rs. 83.16 Lakhs in a <b>single work order/contract in previous seven years from the date of issue of tender.</b></p>
13	-	-	-	-	Completion Period not mentioned in the tender documents for Work commencement.	
14	Section VII	105	-	Annexure-II	Line of credit format not attached in the tender documents for working capital documents from the Bank.	Please refer Annexure-II,pg. no.105 of the Tender document for the required format.
15	Section V	72	2.0	<p>TECHNICAL SPECIFICATIONS</p> <p>2.1 Aluminium Composite Material (ACM)</p>	Is ACM is FR or Non FR	<p>Tender conditions shall prevail</p> <p>ACM is Non FR grade.</p>



**INDRAPRASTHA GAS LIMITED**  
**IGL Bhawan, 4, Community Center,**  
**Sector 9, R.K.Puram, New Delhi-110022**  
**Email: navdeep.kanwar@igl.co.in/mohit.gupta@igl.co.in/ sweeti.kumari@igl.co.in**

**REPLY TO PRE-BID QUERIES**

**RATE CONTRACT OF RVI /SIGNAGE REPAIR, MAINTENANCE AND UPGRADATION AS PER NEW IGL SIGNAGE DESIGN AT IGL CNG STATIONS/ESTABLISHMENTS**

**Tender No.: IGL/ET2/CP/CC18588 dated 12.09.2025**

16	Section V	72	2.0	TECHNICAL SPECIFICATIONS 2.1 Aluminium Composite Material (ACM)	In Tender Document, page 72, Technical Specification of ACM , it has not been clarified, if ACM requirement is in FR grade. If it is FR -Request to include in Specification ACM Core : FR Class B1 ( as per DIN4102-1)	Tender conditions shall prevail  ACM is Non FR grade.
17	Section V	72	2.0	TECHNICAL SPECIFICATIONS 2.1 Aluminium Composite Material (ACM)	IGL Colour references not mentioned both for ACM and Vinyl. Request to include the same.	Tender conditions shall prevail  IGL does not intent to share the color at this stage. The same will be asked at the time of execution to the successful party, as per IGL requirement, bidder had to quote accordingly.
18					We request you to provide tender drawings for further cost evaluation of all items covered under repair and maintenance.	IGL Existing and New RVI design and Drawing attached for reference
19	Section V	72	2.0	TECHNICAL SPECIFICATIONS 2.1 Aluminium Composite Material (ACM)	Detailed Technical Specifications of the scope of work covering all RVI/Signage elements (materials, dimensions, fabrication standards, electrical/LED specifications, coating/finishing, etc.).	Tender conditions shall prevail  Detailed Technical Specifications available at page no. 72.
20					Approved Design Drawings & Layouts of the new IGL signage design, including structural, electrical, and branding aspects.	IGL Existing and New RVI design and Drawing attached for reference
21	Section IV	56	11.1	GUARANTEE / WARRANTY PERIOD	Any additional guidelines/standards (installation methodology, quality checks, safety compliance, warranty requirements, etc.) prescribed by IGL for this tender.	Tender conditions shall prevail  Please refr. Section IV, SCC, page no. 56 for Guarantee/ Warranty Requirements.
22	Section V	77	3.0	APPROVED MAKES FOR RVI REPAIR, MAINTENANCE AND UPGRADATION WORKS	We kindly request you to provide the detailed drawings and the list of approved makes of the required elements. This will enable us to prepare and submit our most competitive quotation for your esteemed organization.	Tender conditions shall prevail  IGL Existing and New RVI design and Drawing attached for reference  Please refr. Section IV, page no. 77, 3.0 for list of approve makes.





Canopy Fascia

# IGL Existing/Old RVI Design and Drawing



## Building Cladding





## Monolith

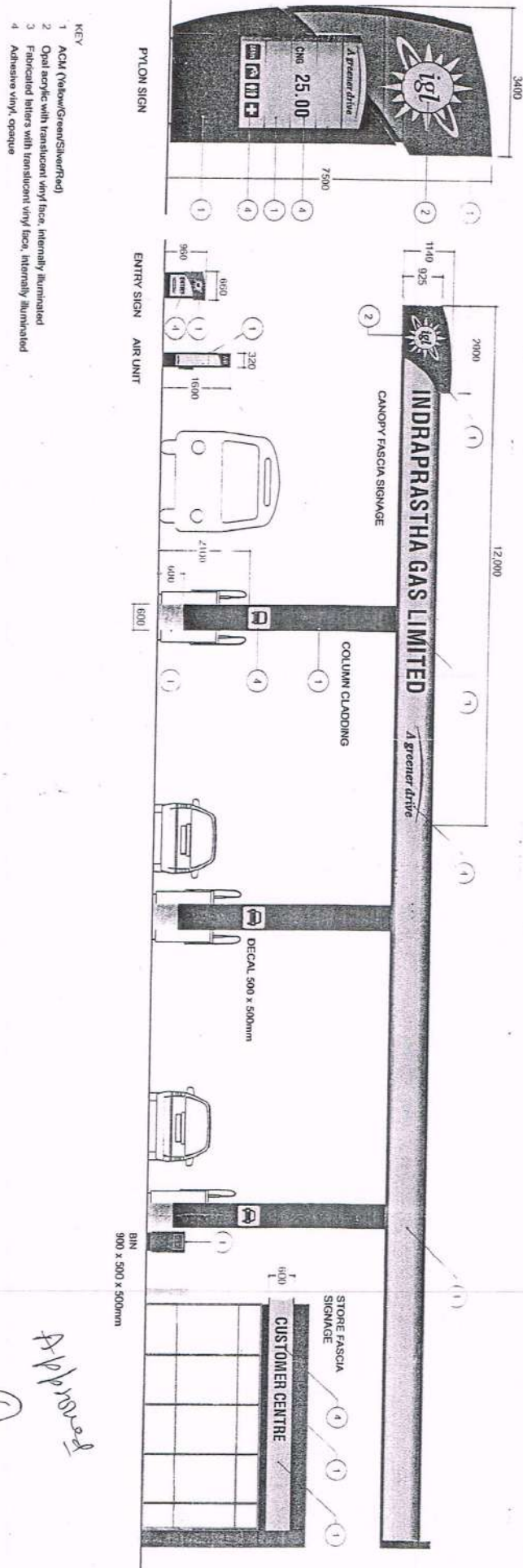


## IGL Branding at ROs





## IGL existing/Old RVI Design and Drawing



client: IGL

description: SIGNAGE OVERVIEW - OPTION WITH RED

CLIENT APPROVAL

Accepted by: .....  
General Manager (Projects)  
INDRAPRASTHA GAS LIMITED

Signature: .....  
"IGL BHAWAN", PLOT No. 4  
C-2, MAHALAXMI CENTRE, R.K. PURAM, SECTOR-9  
NEW DELHI-110 022

Dwg No: 01  
date: 27/03/08  
scale: 1:100  
issue: B

This design is copyright.  
Reproduction or manufacture of  
all or part of this design without  
this company's permission is  
prohibited.

Tel: 011 26264210  
 011 26264205  
 Fax: 011 26264206  
 Email: [advertising@signs.co.in](mailto:advertising@signs.co.in)  
 108, Anandji Maharaj, Puri  
 C-11, 7th Floor, Puri  
 New Delhi - 110001  
 India

**International Corporate Sign Pvt Ltd**

**SUDHANSHU PANT**  
General Manager (Products)  
**LIMITED**  
INDRAPRASTHA GAS LIMITED  
Plot No. 4  
SECTOR-9  
INDRAPRASTHA  
COMMUNITY  
INDRAPRASTHA

Approved

*Paul*

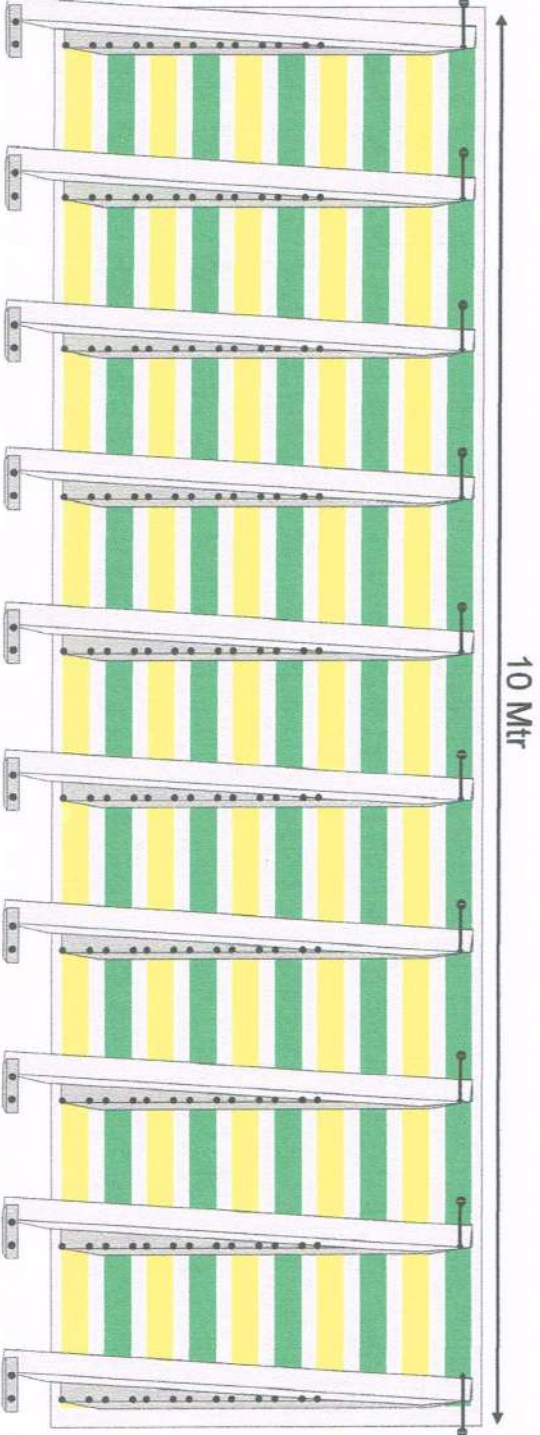


International Corporate Signs Pvt Ltd



# BUILDING ~~FAST~~ CLADDING

## BACK VIEW



## INDEX

	Aluminum Angle
	Nut Bolt
	Screw
	L Patti with Fastener
	25MMx50mm x 3 Mtr Ms <del>Angle</del> <sup>Pipe</sup>
	Green ACP Sheet
	Yellow ACP Sheet

ON EVERY 1000 MM 25MMx50MMx3.6MM PIPE TO BE USED FOR SUPPORT.

ON EACH STAFF OF ACM 25MMX25MMX2MM Aluminium Angle to be fixed on bending part. (GUARDING CLADDING)



Red ACM. 550 [ 25 50

LOGO RED ACM. → 595 [ 25 25

GREEN ACM → 150 [ 25 25

YELLOW ACM → 150 [ 25 25

UPPER  
LOGO  
1200MM  
X  
1200MM

280MM  
280MM  
550MM



# IGL New RVI Design and Drawing



**INDRAPRASTHA GAS**

**Final Gas Station Renders**







**IMPORTANT CONTACTS**

1. IGL Customer Care	2. IGL Service Center
3. IGL Emergency Helpline	4. IGL Gas Supplier
5. IGL Gas Supplier	6. IGL Gas Supplier
7. IGL Gas Supplier	8. IGL Gas Supplier
9. IGL Gas Supplier	10. IGL Gas Supplier
11. IGL Gas Supplier	12. IGL Gas Supplier
13. IGL Gas Supplier	14. IGL Gas Supplier
15. IGL Gas Supplier	16. IGL Gas Supplier
17. IGL Gas Supplier	18. IGL Gas Supplier
19. IGL Gas Supplier	20. IGL Gas Supplier



























INDRAPRASTHA GAS











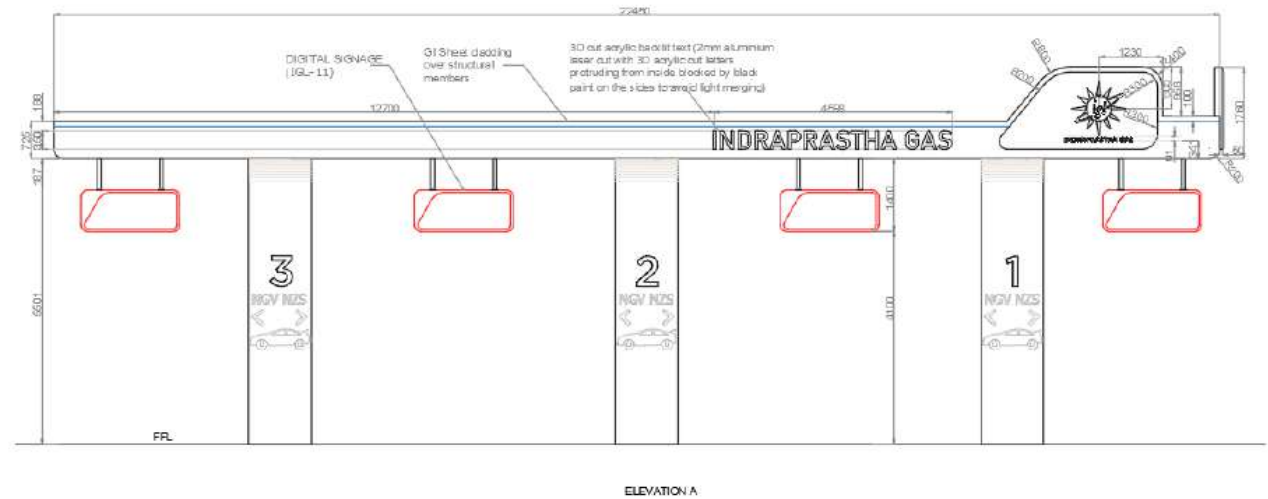
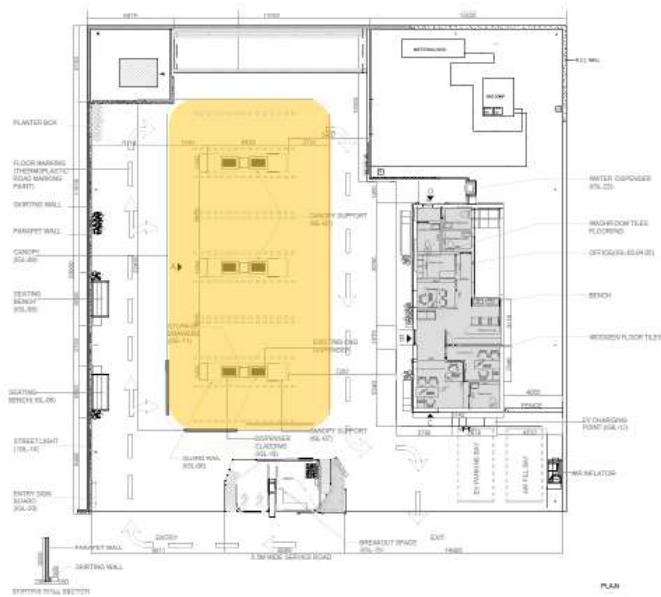
# Thank You



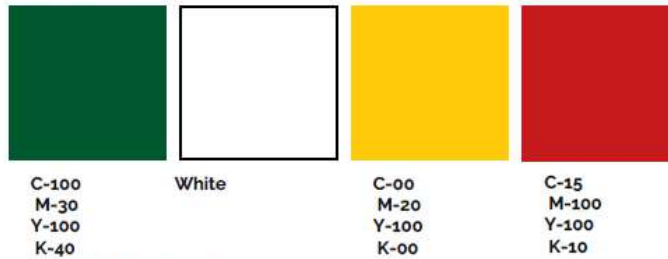
# IGL New RVI Design and Drawing

## 3.1 Exterior | 3.1.1 Canopy

Location of Canopy



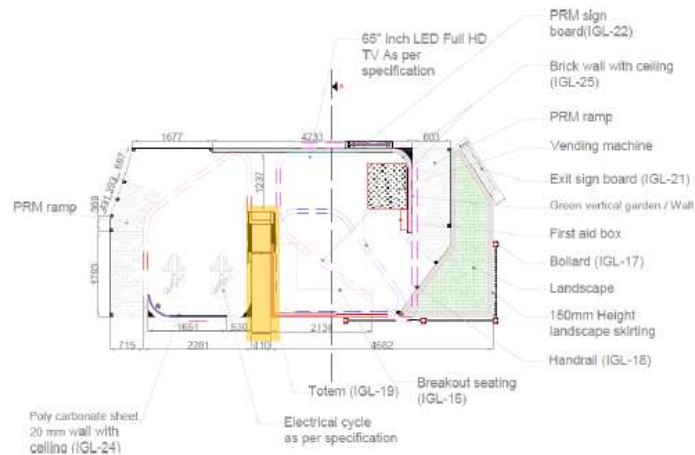
Color swatches



NOTE: Refer Structures Detail drawings for canopy

## 3.2 Waiting area | 3.2.1 Totem

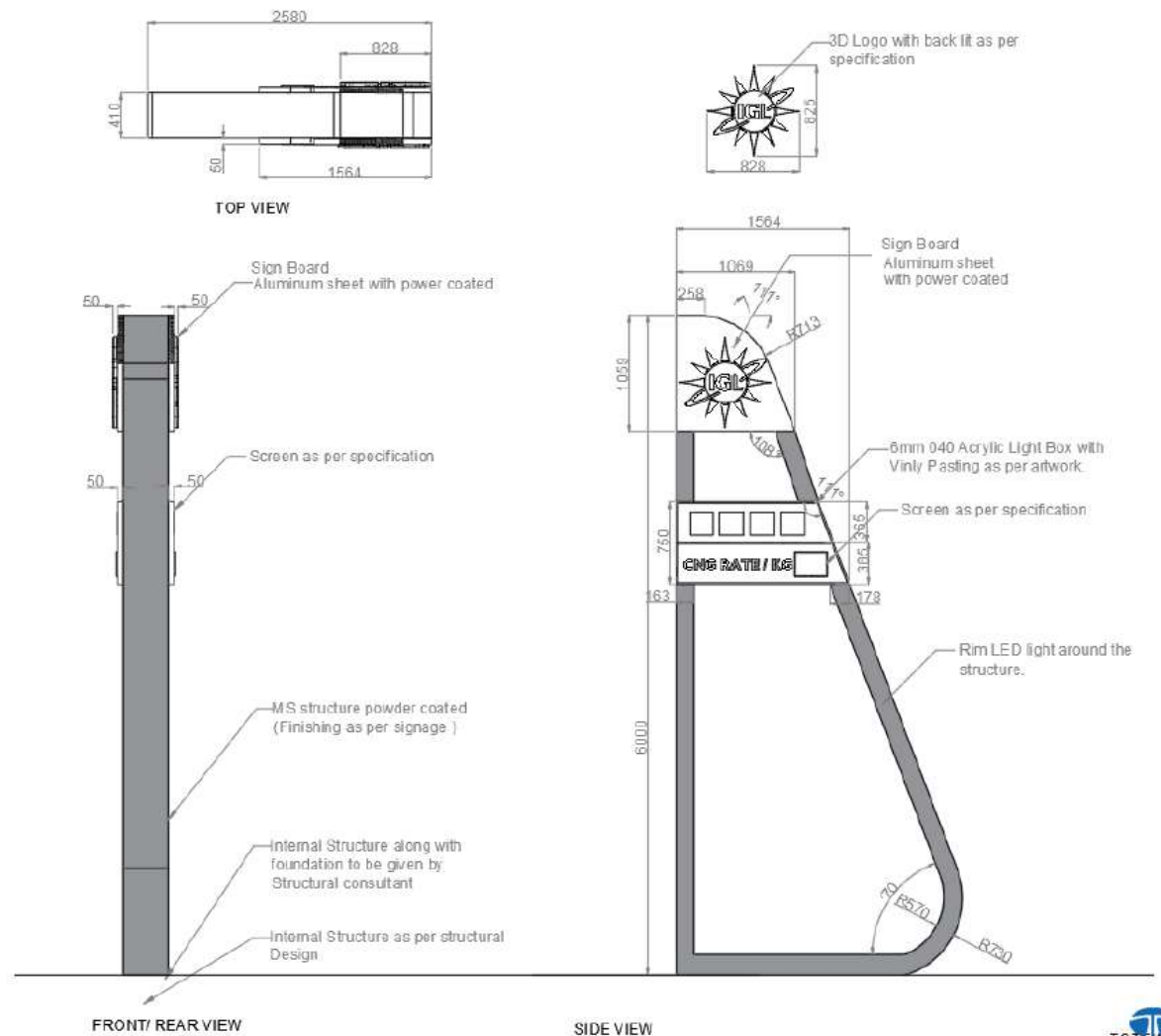
### Location of Totem



### Color swatches



M-30  
Y-100  
K-40



NOTE: Refer Structures Detail drawings for totem



## 3.1 Exterior | 3.1.15 Canopy light layout

### Description

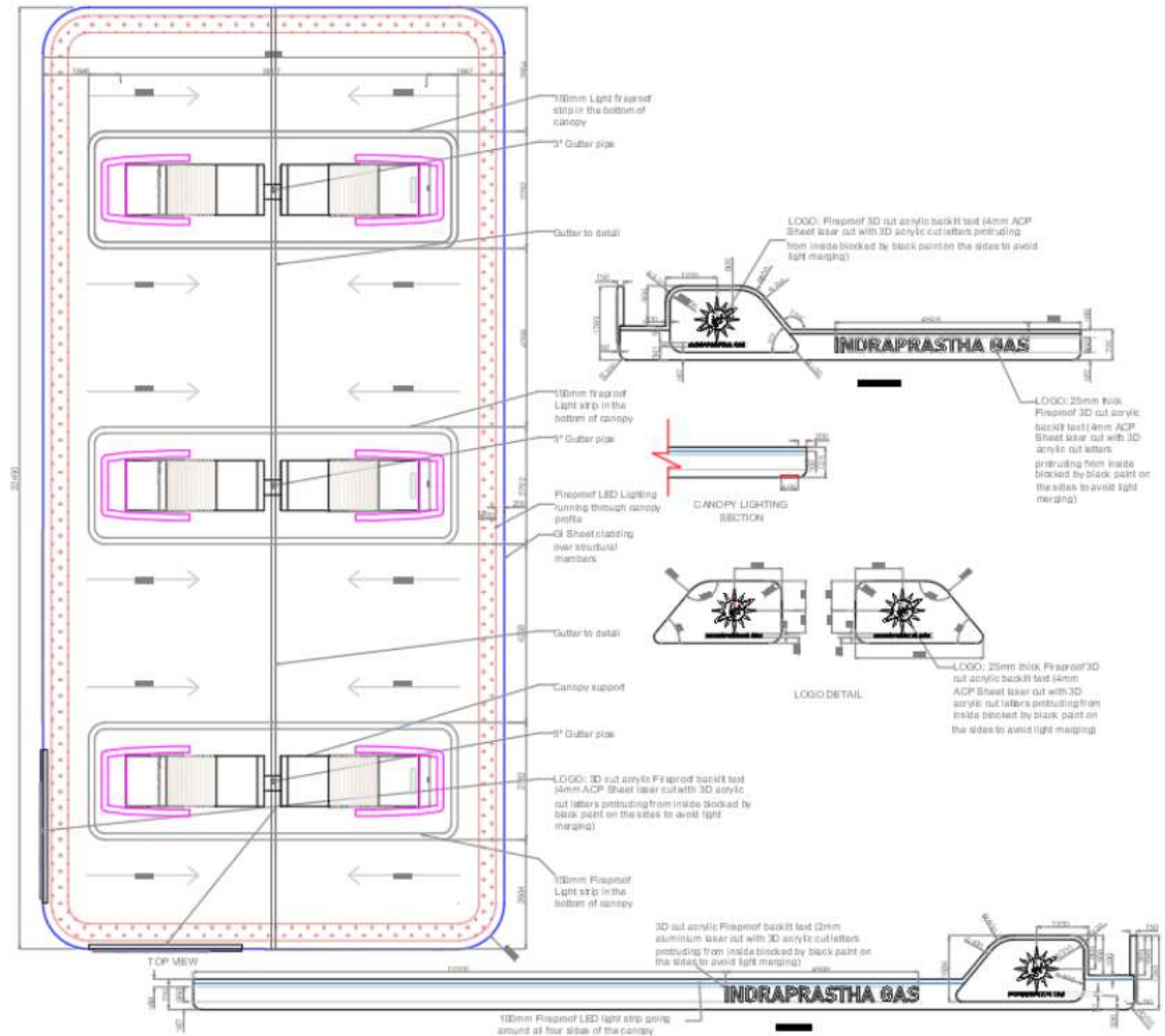
The lighting of the gas station is a meticulous blend of functionality, safety and aesthetics.

### Purpose

The lighting not only enhance the security but also accentuates architectural elements, creating a visually appealing atmosphere.

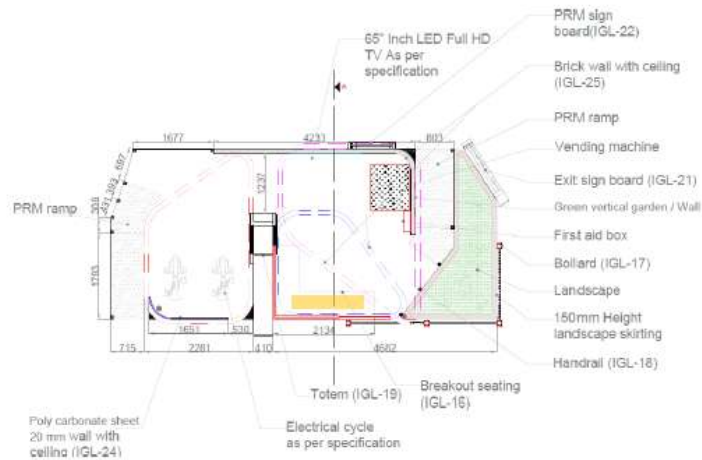
### Placement

It is placed around the dispenser unit in such a manner that it illuminates the entire space, ensuring visibility and safety of the users.



## 3.2 Waiting area | 3.2.3 Station name

### Location of Station Name



### Color and Material swatches



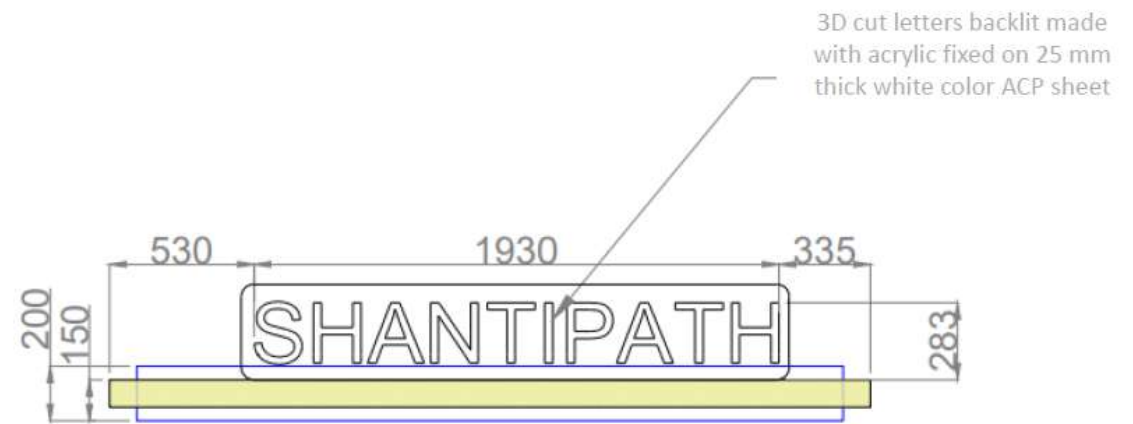
3D Cut lit acrylic letters



White



C-100  
M-30  
Y-100  
K-40



Detail -a



## 3.4 Signages | 3.4.1 Direction Signs

### Description

- Direction signage is one tool in the toolbox of wayfinding, where both signage and architectural cues are used to direct users towards their desired location
- Direction sign with digital screen also indicates the waiting time, gas rate and facilities available at station

### Purpose

- To identify entry, exit directions and a specific locations within the gas station

### Placement

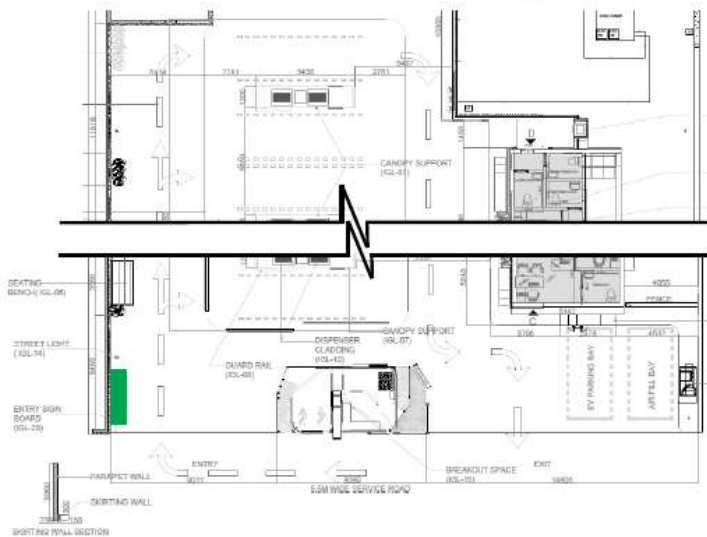
- At all decision-making points / Junctions to navigate people to correct location.
- It should always be placed in a way that inclined side of the sign box is facing the direction.





## 3.4 Signages | 3.4.1 Direction Signs

Location of Direction sign



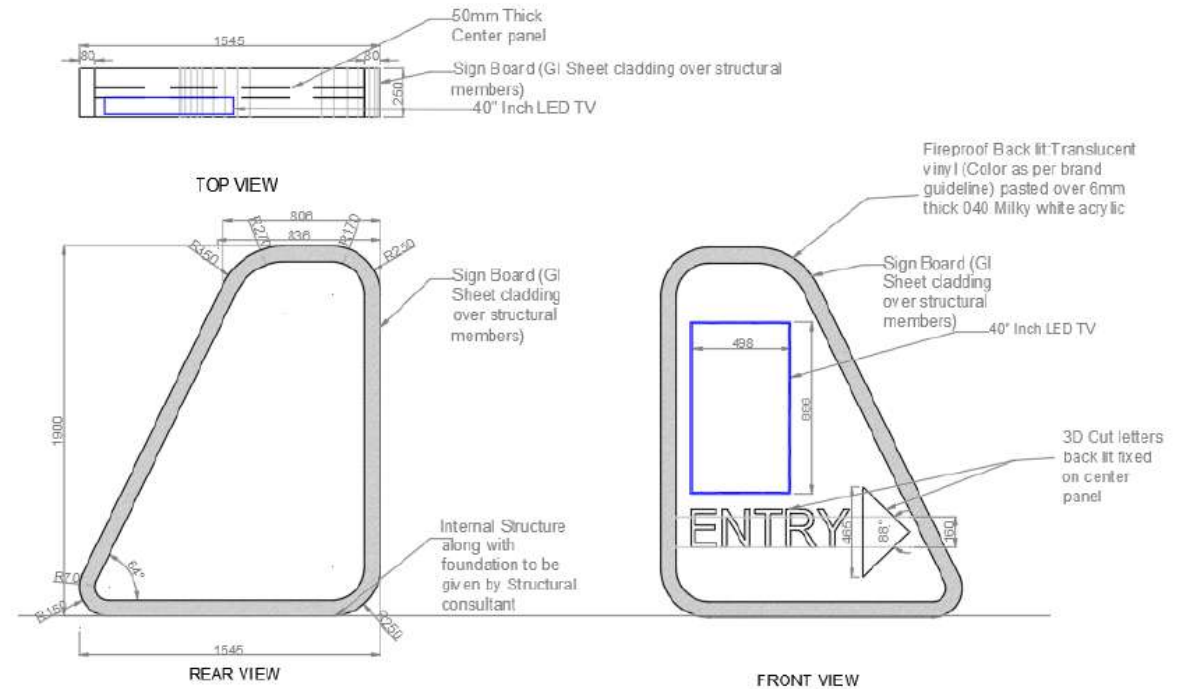
Color swatches



C-100  
M-30  
Y-100  
K-40

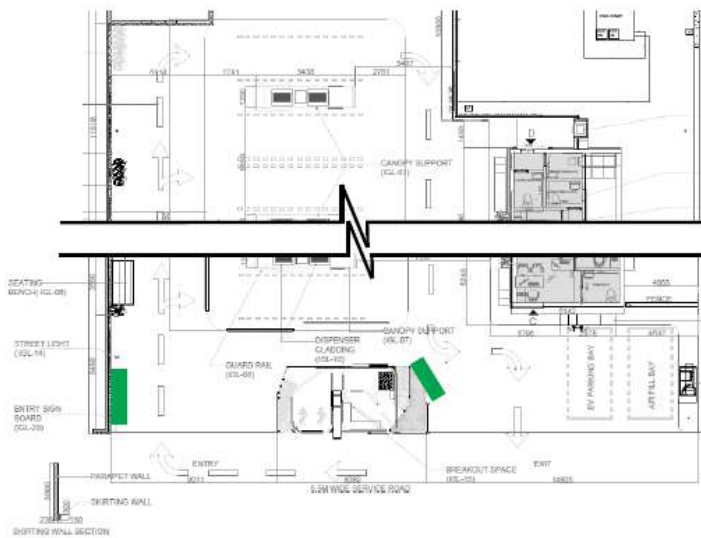


White



## 3.4 Signages | 3.4.1 Direction Signs

Location of Direction sign



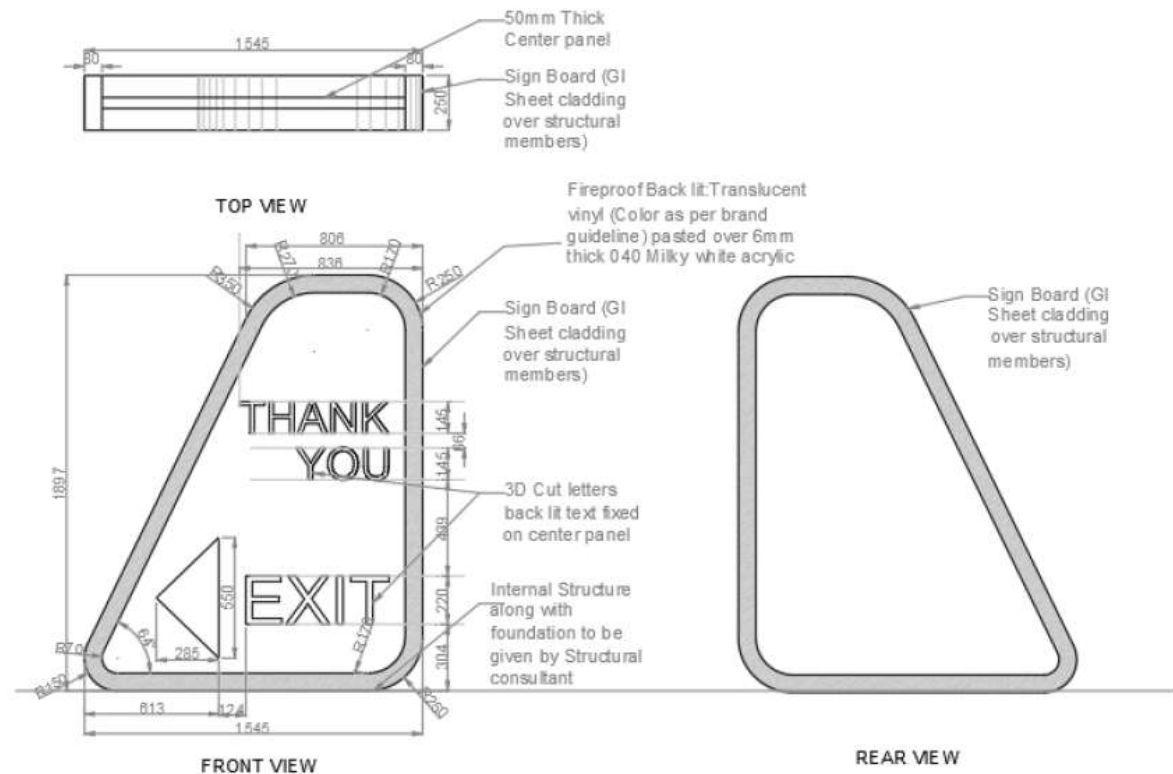
Color swatches



C-100  
M-30  
Y-100  
K-40



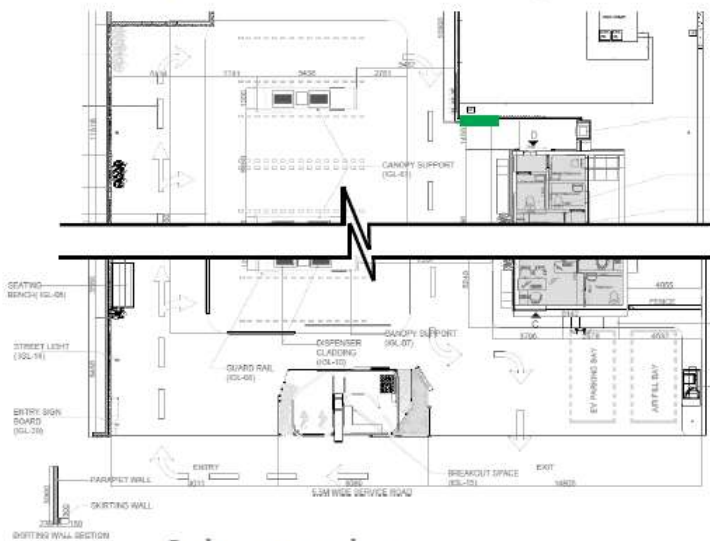
White





## 3.4 Signages | 3.4.1 Direction Signs

### Location of Direction sign

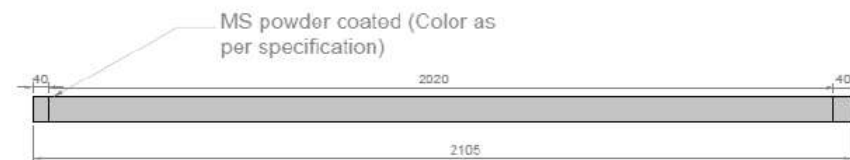


### Color swatches



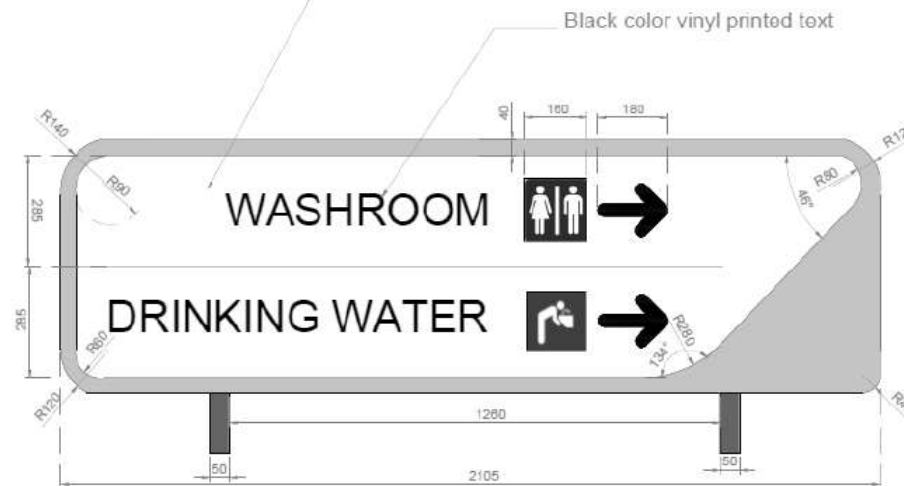
C-00  
M-20  
Y-100  
K-00

White

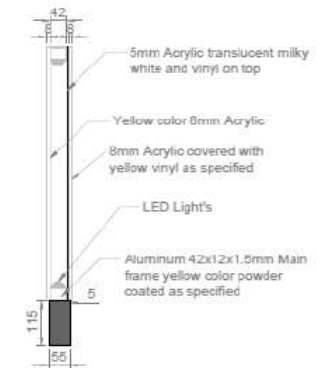


TOP

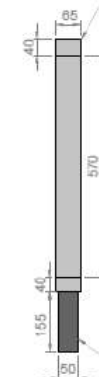
5mm Acrylic translucent  
milky white and vinyl on top



FRONT



MS powder coated (Color  
as per specification)



SIDE VIEW

MS powder coated (Color  
as per specification)

## 3.4 Signages | 3.4.5 Announcer signs

### Description

- Announcer signs help users to quickly identify and the facilities

### Purpose

- To announce specific locations or facilities within the gas station

### Placement

- At the touch points where users need assurance that they have reached correct location.
- Announcers need to be placed a way that they are clearly visible to users from a distance.



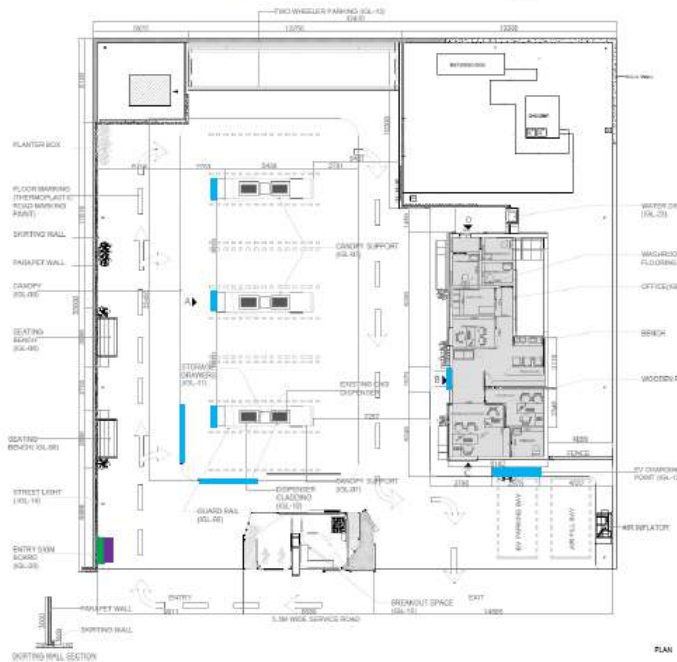
CUSTOMER SERVICE



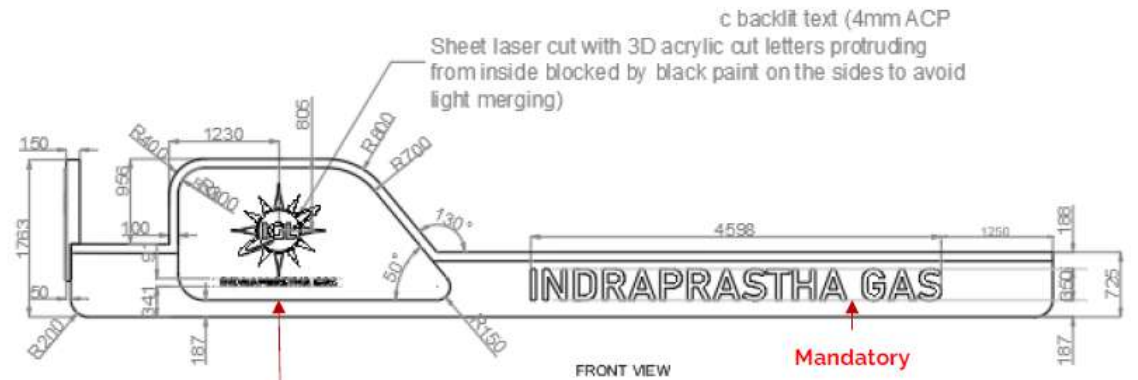
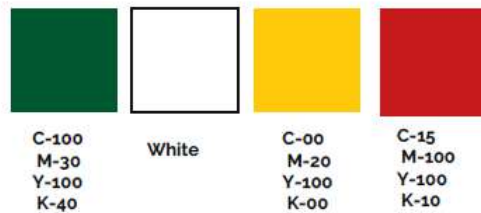


### 3.4 Signages | 3.4.5 Announcer signs

### Location of Announcer sign



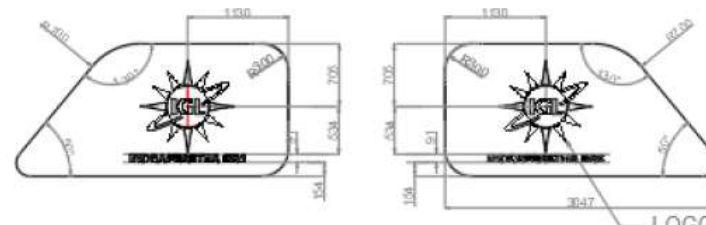
## Color swatches



**Mandatory**

**Mandatory**

LOGO: 25mm thick Fireproof 3D cut acrylic backlit text (4mm ACP Sheet laser cut with 3D acrylic cut letters protruding from inside blocked by black paint on the sides to avoid light merging)



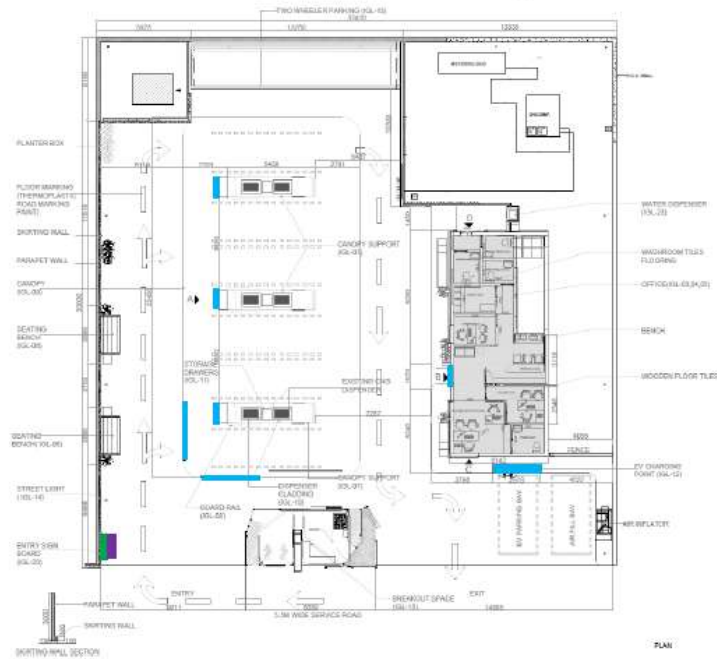
### LOGO DETAIL

LOGO: 25mm thick Fireproof 3D cut acrylic backlit text (4mm ACP Sheet laser cut with 3D acrylic cut letters protruding from inside blocked by black paint on the sides to avoid light merging)



## 3.4 Signages | 3.4.5 Announcer signs

### Location of Announcer sign



### Color swatches

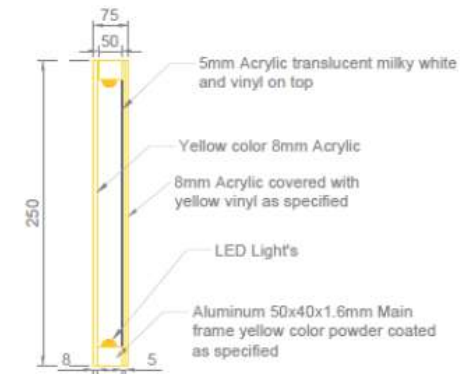
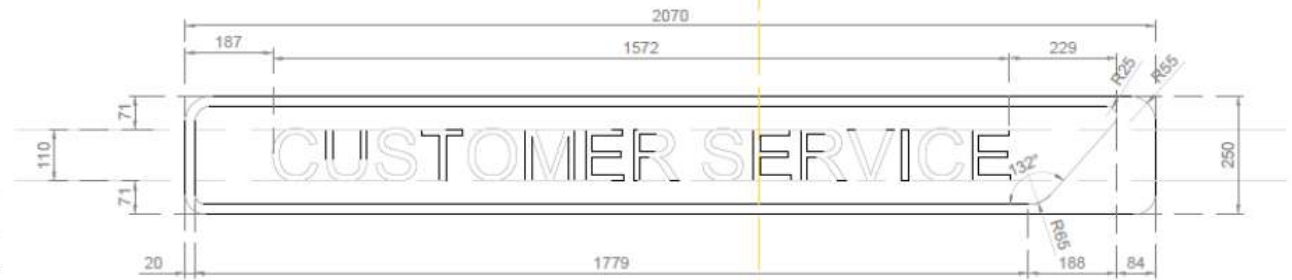


C-00  
M-20  
Y-100  
K-00

White

C-100  
M-30  
Y-100  
K-40

A ▶



SECTION A